



LUA

R E S I D E N C E S

THE LIGHT OF MEYDAN

AFS
REAL ESTATE
STAY AHEAD, INVEST SMART

db
DUBRICKS
POSSIBILITIES ARE LIMITLESS

CONTENTS



THE ORBIT

Dubai
Meydan
MBR City, District 11
Location
Master Community



NEW BEGINNINGS

Lua Residences



THE RADIANCE

Design
Aesthetics
Functionality



THE ATMOSPHERE

Amenities



THE LUMINARY

Swank Development



THE REVEL IS IN THE DETAIL

Our world is guided by the interplay of details - big and small, bright and sparkly, but also the lights and the darks. Waxing and waning of energies.

Perfection in living spaces is all about getting the details right. Location, experiences, ambiance, and everything else coming together to enable intuitive designs that empower innate desires.



THE ORBIT



DUBAI

Dubai's allure extends far beyond its iconic skyline. As a lively metropolis, Dubai provides an exceptional mix of security, a prime geographical location, and superior living standards. Apart from its breathtaking architecture and lavish offerings, Dubai prides itself on its safety, world-class educational and healthcare systems, and a rich multicultural community.

With a business friendly environment and streamlined processes, Dubai empowers investors to reach their full potential.

Owning a home in Dubai isn't just an investment; it's a gateway to a life filled with endless possibilities.


MEYDAN

Meydan is the visionary concept of His Highness Sheikh Mohammed Bin Rashid Al Maktoum, UAE Vice President, Prime Minister and Ruler of Dubai.

Since its inaugural opening in 2010, Meydan has attracted the attention of the world with the Meydan Racecourse being the centrepiece. MBR City, District 11 is already considered to be one of Dubai's most anticipated projects, with innovative developments and opportunities on the horizon.

The Dubai of tomorrow starts here.



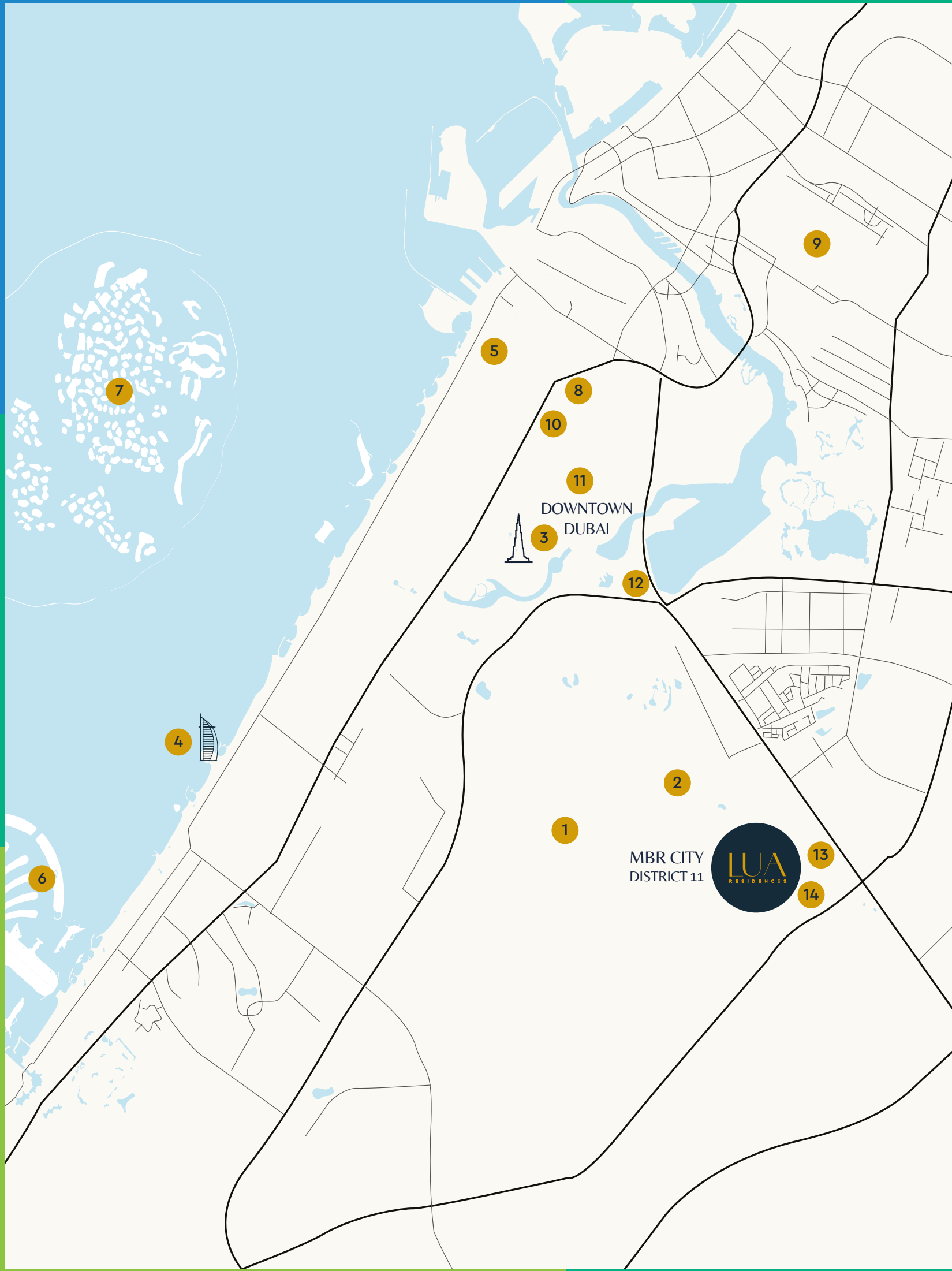


MOHAMMED BIN RASHID CITY, DISTRICT 11

District 11 is a premier lifestyle community set in the heart of the city. It offers elegant homes overlooking a crystal lagoon, sublime beaches, sweeping parkland, cycling and running tracks and breathtaking architecture.

District 11 has redefined upscale community living with picturesque walkways sheltered by tree-lined avenues and a crystal lagoon.

This stunning 21st-century oasis offers residents an idyllic and exclusive beachfront retreat, at the very centre of Dubai. District 11 ensures residents have access to parks, lawns, green corridors, and landscaped gardens, making it the perfect backdrop for natural and healthy living.



POINTS OF INTEREST

- 1 Mohammed Bin Rashid Al Maktoum City
- 2 Meydan Racecourse
- 3 Burj Khalifa
- 4 Burj Al Arab
- 5 Jumeirah Mosque
- 6 Palm Jumeirah
- 7 World Islands
- 8 Emirates Towers
- 9 Dubai International Airport
- 10 Dubai International Financial District
- 11 Dubai Mall
- 12 Dubai Design District
- 13 Kent College
- 14 Lycee Libanais Francophone School

THE MASTER COMMUNITY

- VAST OPEN SPACES
- CRYSTAL LAGOON
- COMMUNAL GARDENS
- SPORTS FACILITIES
- GATED COMMUNITY
- MOSQUE
- RETAIL
- SUPERMARKETS
- SCHOOLS
- CLINICS

LUA
RESIDENCES





NEW BEGINNINGS

Welcome to Lua Residences

An exclusive gated community of 37 exquisite villas surrounded by lush landscaping nestled in Dubai's most prestigious community.



THE COMMUNITY



MASTERPLAN

- 1 ENTRANCE
- 2 COMMUNITY/BBQ AREA
- 3 UTILITY AREA





THE RADIANCE

A LIFE UNPARALLELED

When "extra" is the new normal, it becomes a challenge to find a distinctive signature statement. Understanding and using the finer nuances, specifics and particulars is nothing less than an art.

Here's to a life beyond the conventional
— bespoke living crafted just for you.



DESIGN APPROACH

We approach design with a profound understanding of our customers, translating this comprehension into impeccable designs that foster memorable moments, elevating the concept of living to new heights.

Exquisite finishes, layering, and textures create a living space that goes beyond the surface, inviting you to discover more than meets the eye.





CONTEMPORARY SOPHISTICATION

From sleek, contemporary lines to timeless architectural features, Lua Residences offers a harmonious fusion, creating a truly distinctive ambience.



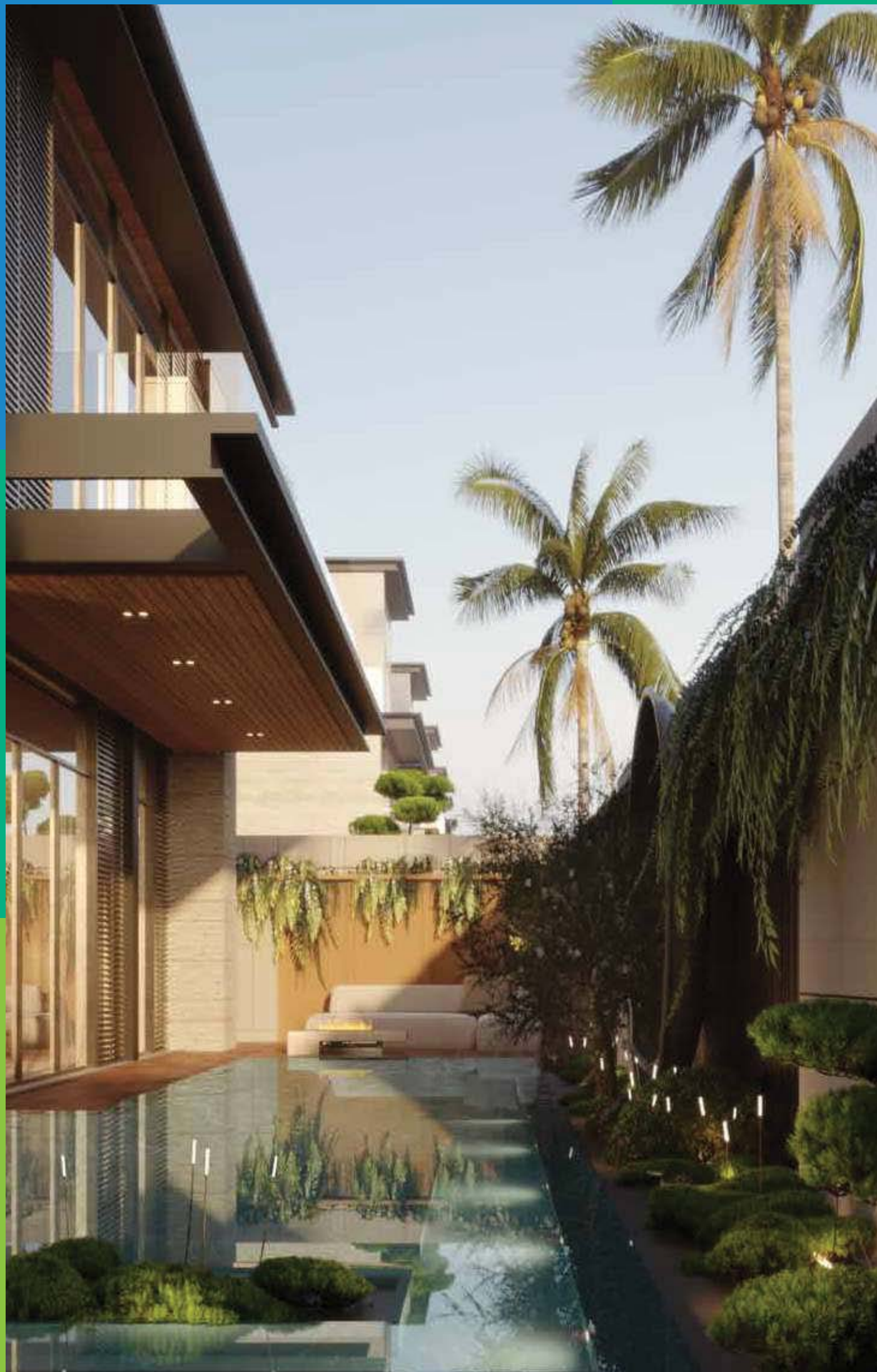
SPACIOUS LAYOUTS

Open, adaptable living spaces designed to enhance your everyday lifestyle. Spacious layouts seamlessly blend functionality with elegance, offering you the freedom to create your own oasis of comfort and style.



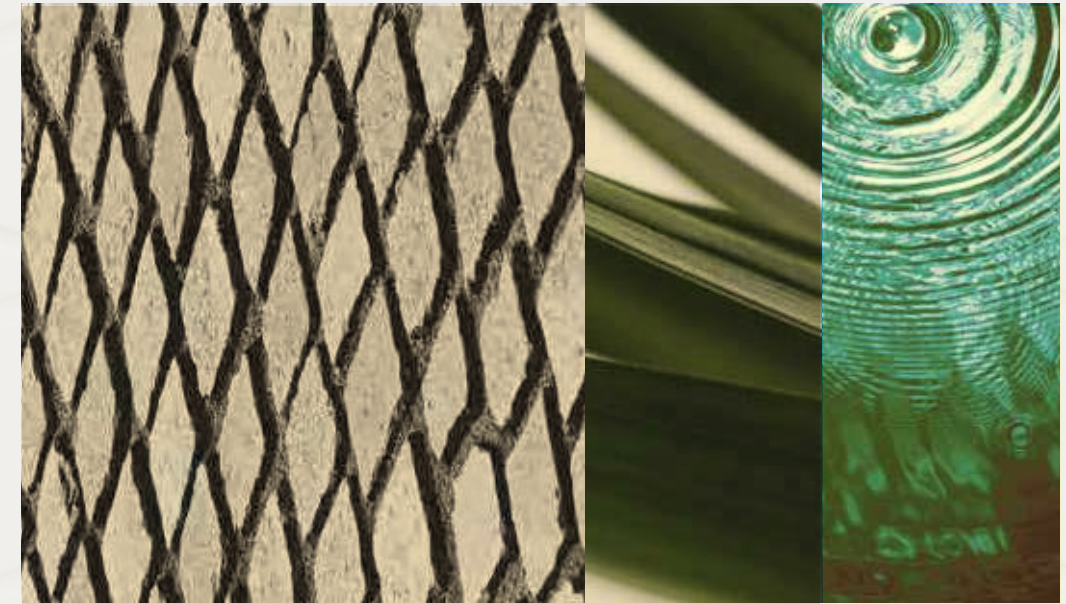
EXQUISITE CRAFTSMANSHIP

At Lua Residences, different materials come together to enrich the depth and character of our interiors. From the smooth, polished surfaces of marble to the rustic charm of timber, every element is carefully chosen. From meticulously crafted finishes to intricate architectural elements, the residences reflect a dedication to perfection that is synonymous with Portuguese tradition.



NATURAL ELEMENTS

The soothing rich tones of timber and natural stone, along with the natural elements that adorn the interiors and exteriors, add a layer of organic beauty to every space, inviting you to embrace the essence of tranquil living.



COBBLESTONE PAVEMENTS

Inspired by the cobblestone streets of Portugal, these intricately laid patterns infuse the surroundings with a sense of history and artistry.

A low-angle, upward-looking photograph of pine trees. The dark, silhouetted branches and needles of the trees frame the top and sides of the image, creating a natural border. In the center, a clear, deep blue sky is visible, with a thin, white crescent moon positioned just below the main title. The overall mood is serene and natural.

STUNNING LAYOUTS

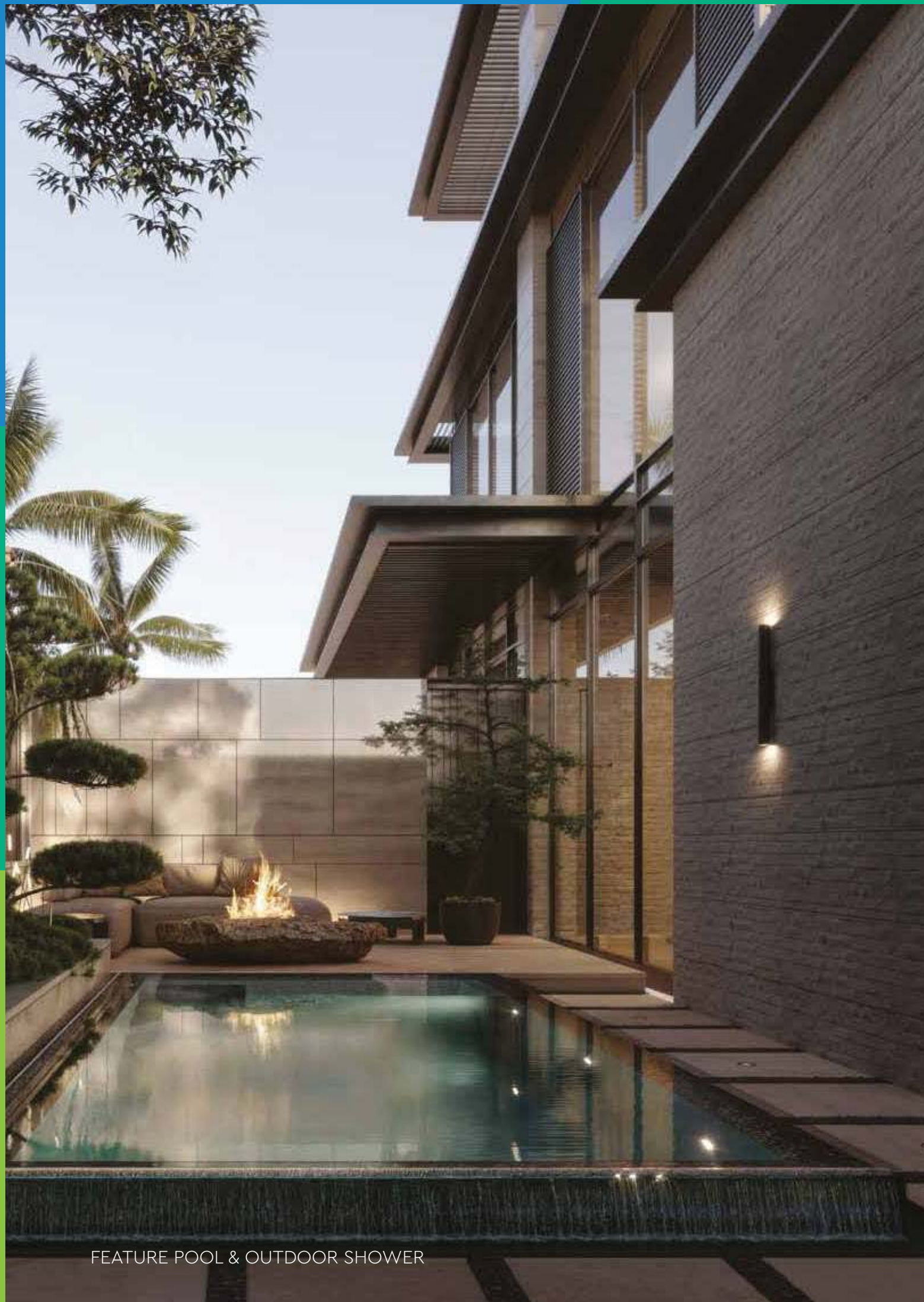
Each villa has its own unique architectural elegance and impeccable style. The aesthetics emphasize retaining the natural patina and earthiness, grounding the design to create a warm and welcoming atmosphere for everyone in the family. Each villa also comes with smart home integration, adding modern convenience to timeless charm.

CAPELLA VILLAS

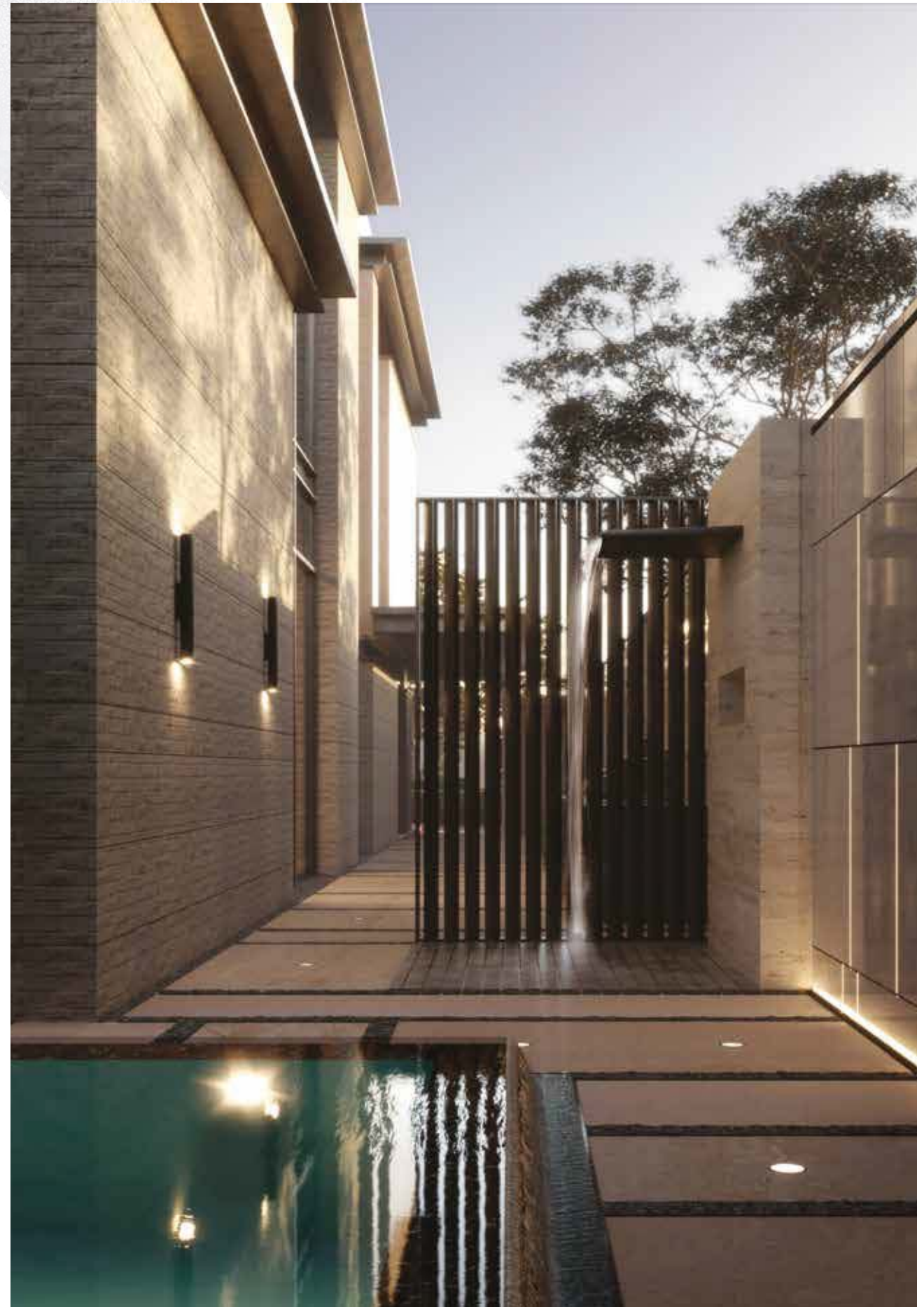
TWIN 4-BEDROOM | 3,437.05 sq.ft | 14 UNITS | PRIVATE SWIMMING POOL, ELEVATOR AND LANDSCAPED GARDEN








FEATURE POOL & OUTDOOR SHOWER





Named after the brightest star in the Auriga constellation, symbolising the luminous allure of twin stars.

LIVING ROOM

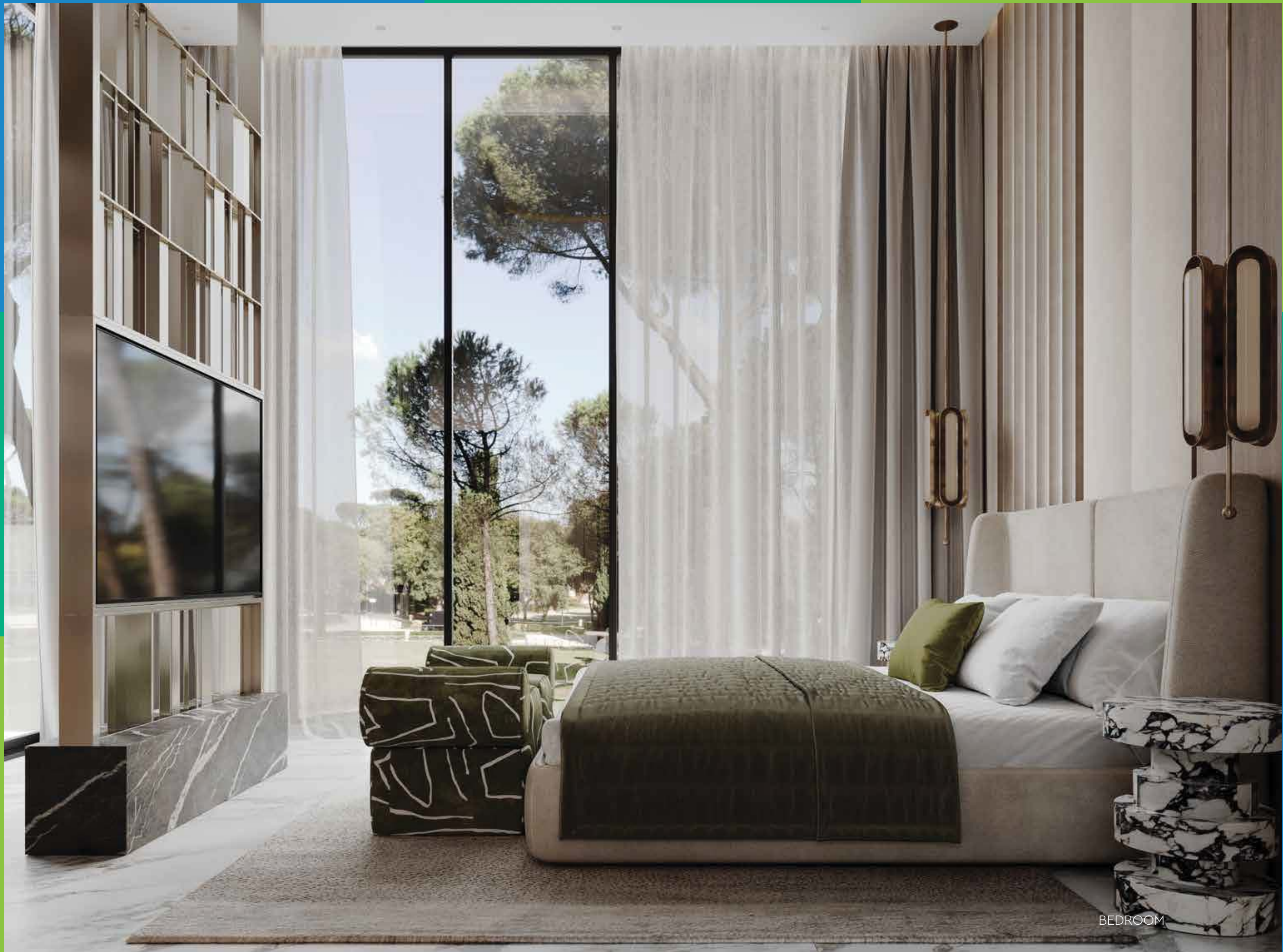


LIVING ROOM & DINING AREA





KITCHEN



BEDROOM



BATHROOMS

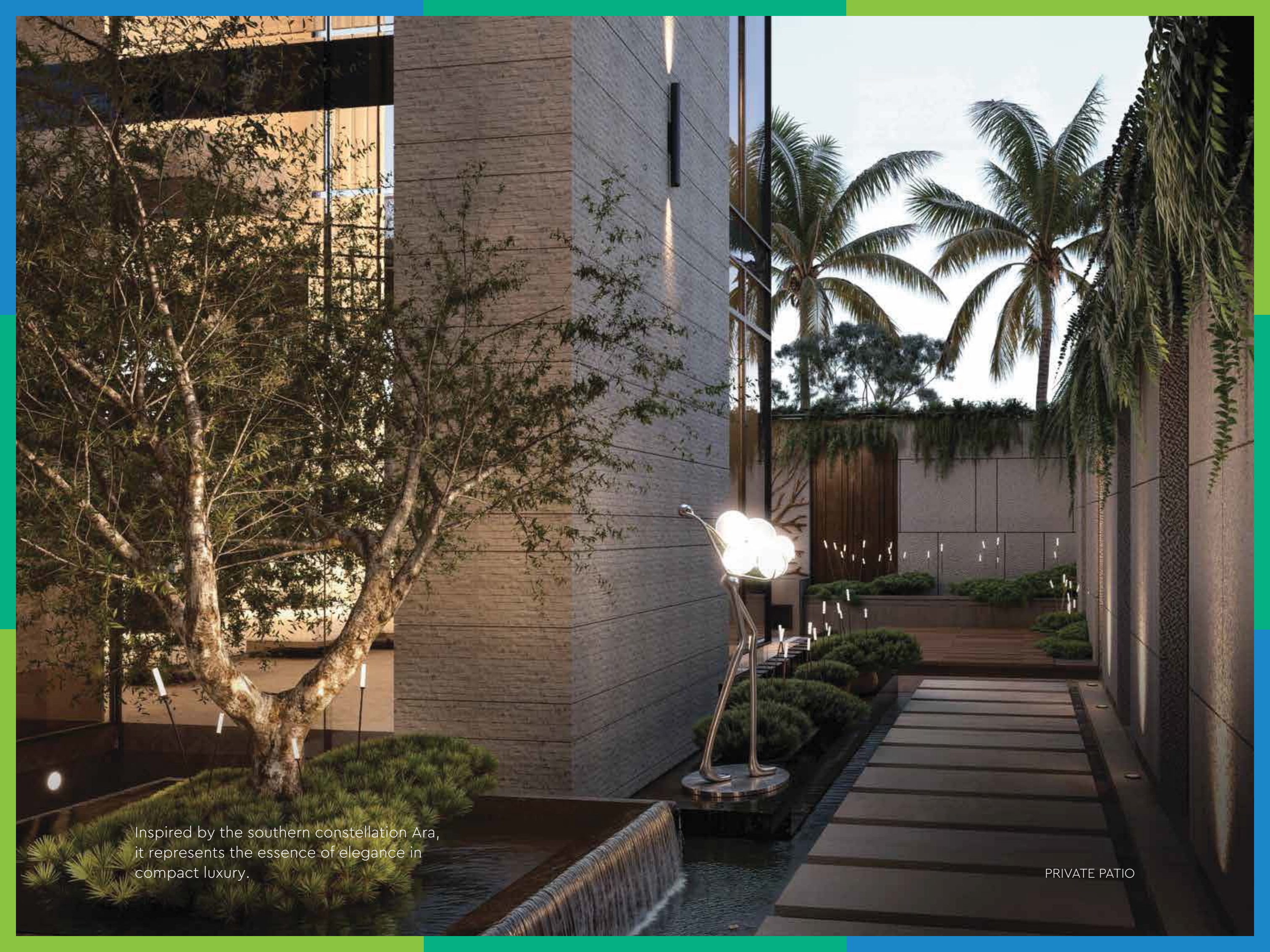


ARA VILLAS

5-BEDROOM VILLA TYPE A | 4,677.71 sq.ft | 5 UNITS | PRIVATE SWIMMING POOL, ELEVATOR AND LANDSCAPED GARDEN





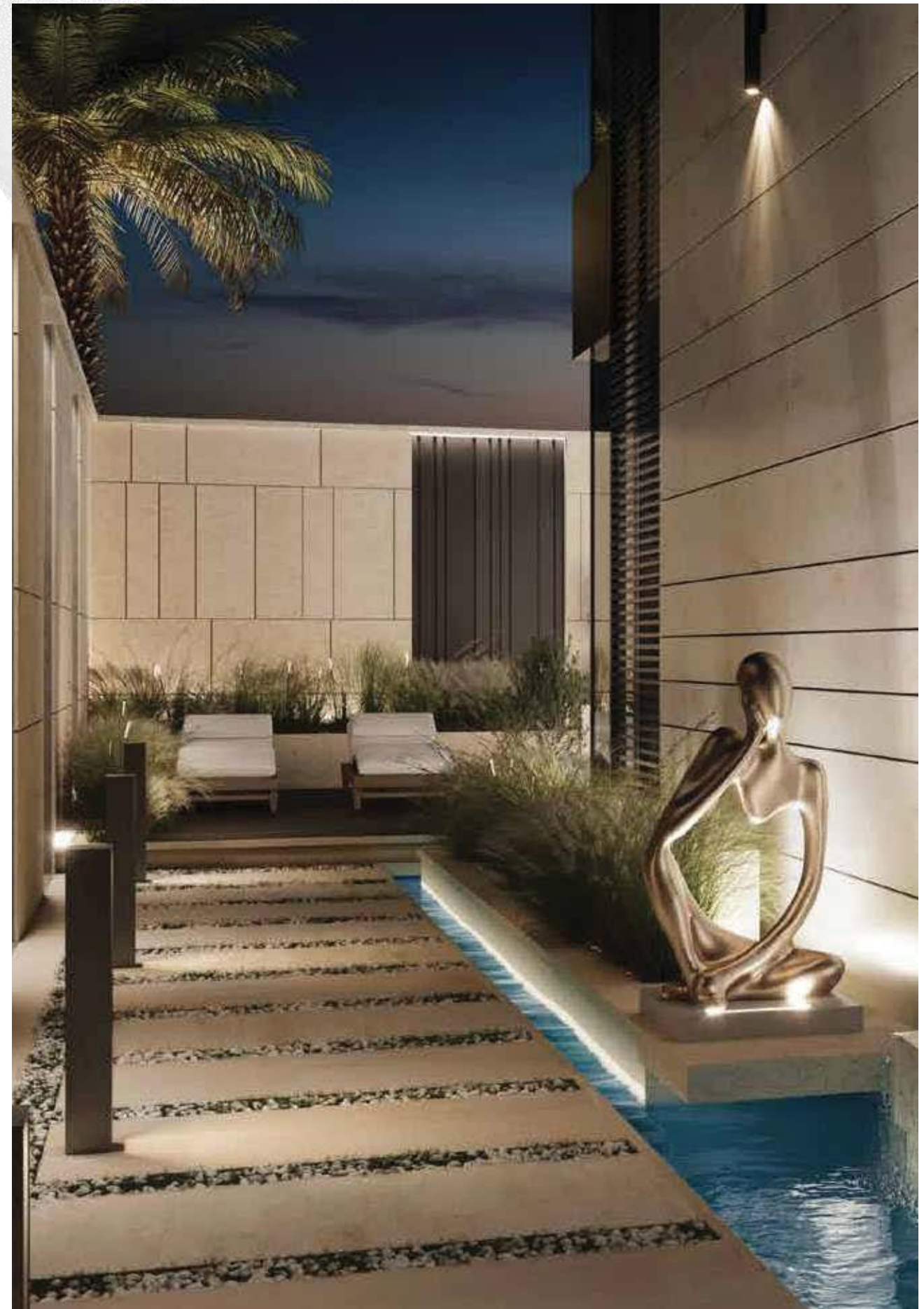
A photograph of a modern private patio at dusk. On the left, a large, mature tree with dense green foliage stands in a planter bed. In the foreground, a low, wide waterfall cascades over a dark edge into a pool of water. To the right of the waterfall, a tall, slender sculpture of a figure holding a cluster of glowing spheres stands on a dark base. A path of dark, rectangular stone tiles leads from the foreground towards the background. The background features a modern building with a light-colored, textured facade and large glass windows. Several palm trees are visible against the twilight sky. The overall atmosphere is sophisticated and serene.

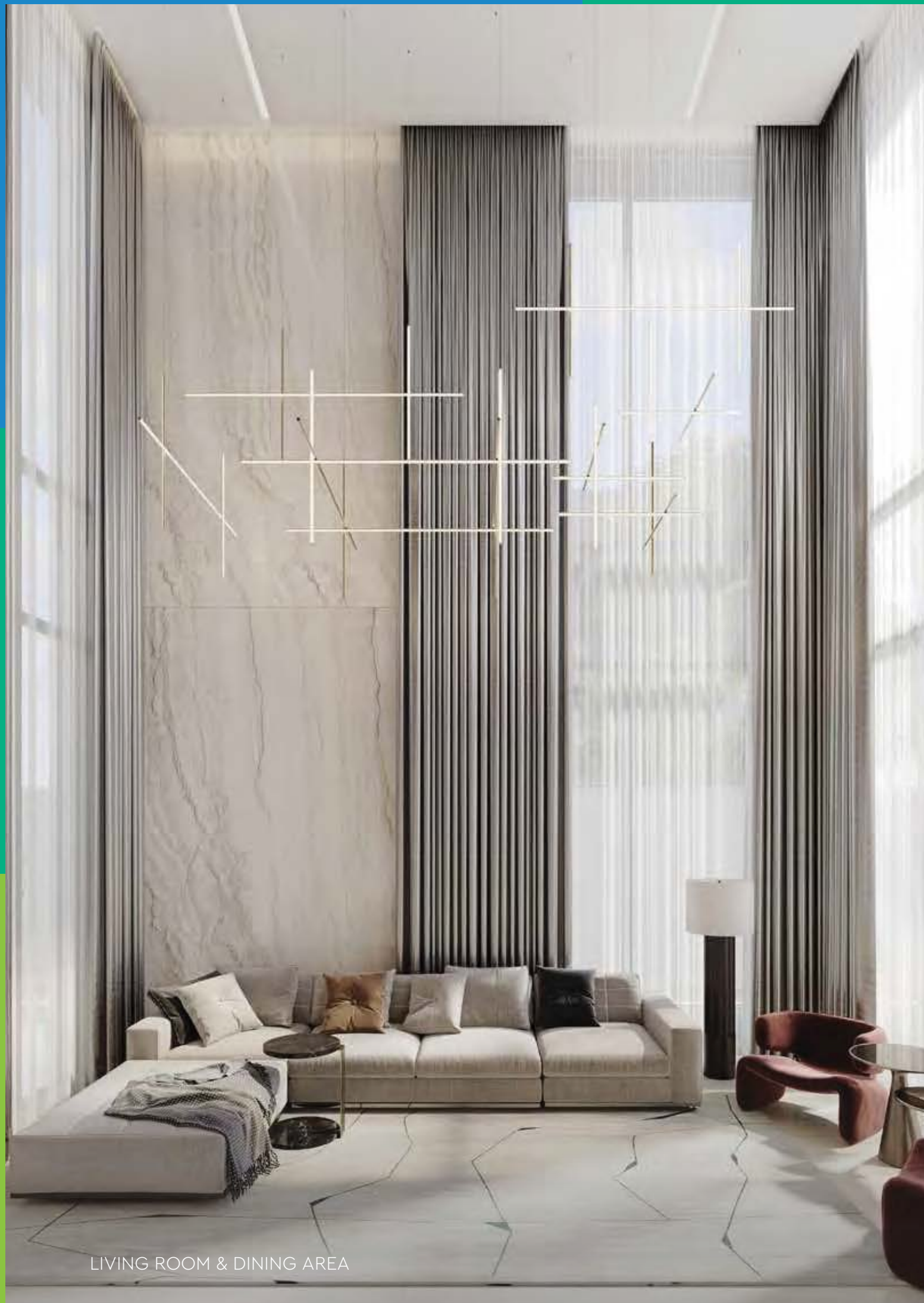
Inspired by the southern constellation Ara,
it represents the essence of elegance in
compact luxury.

PRIVATE PATIO

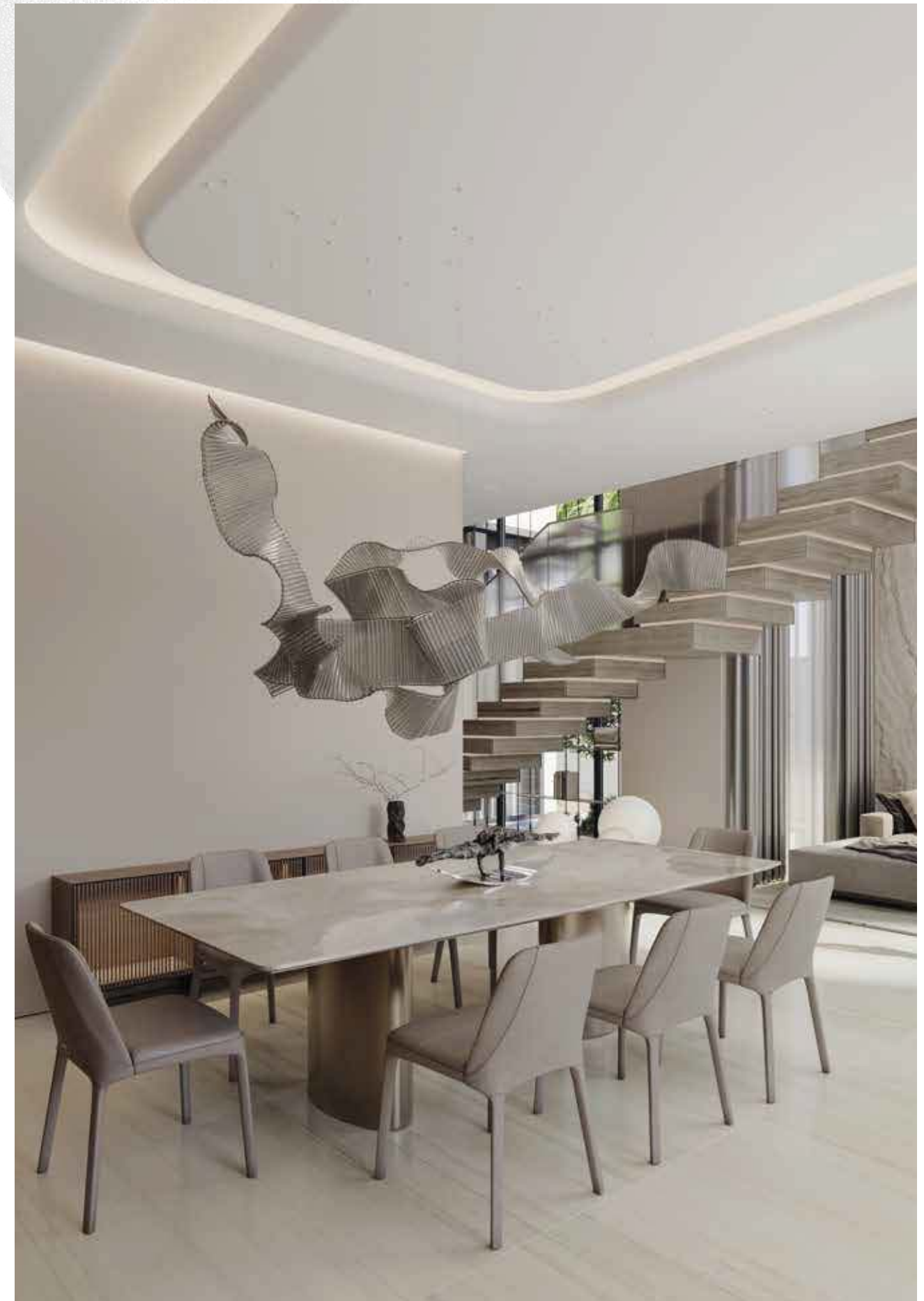


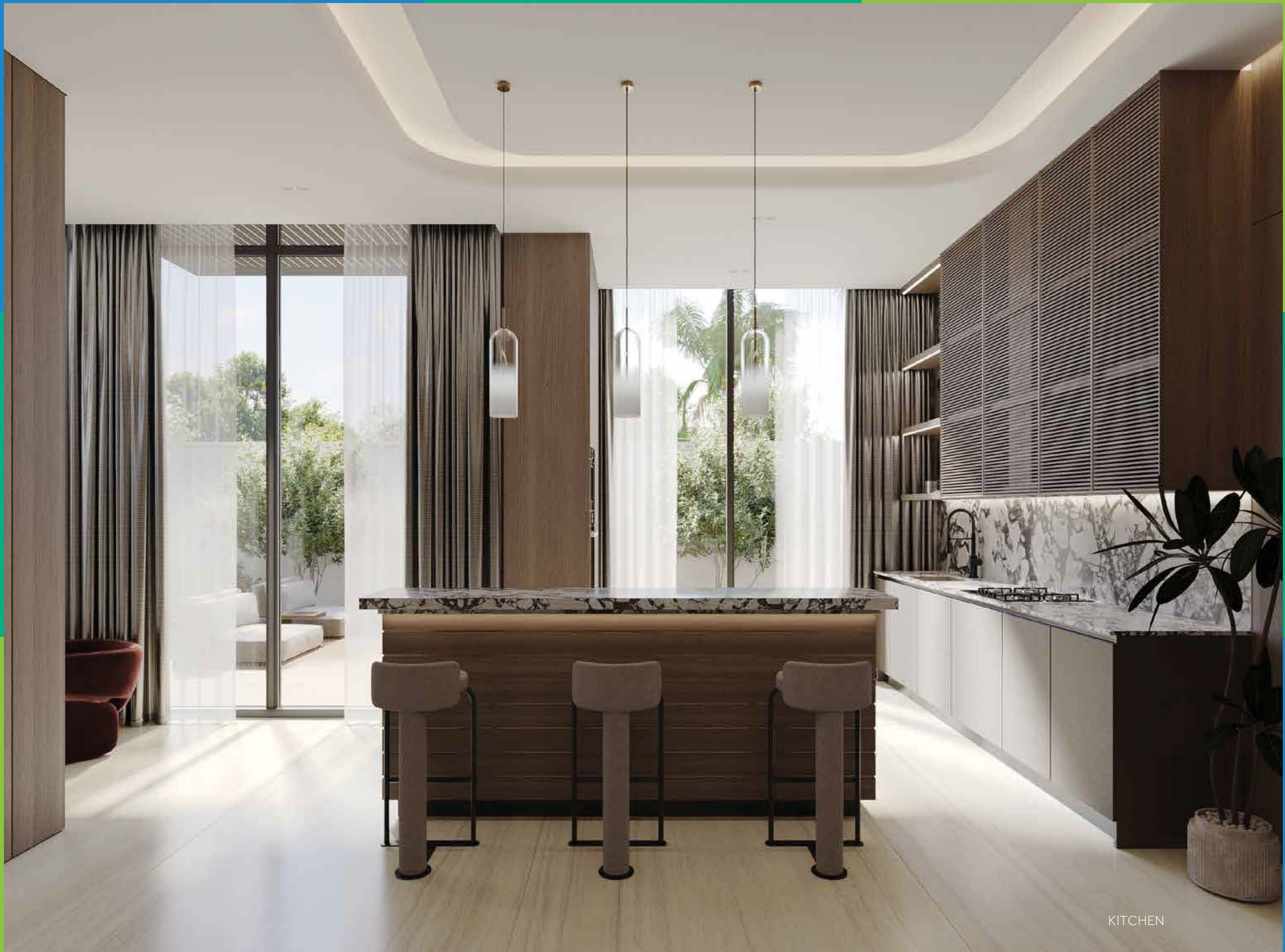
POOL DECK & TERRACE



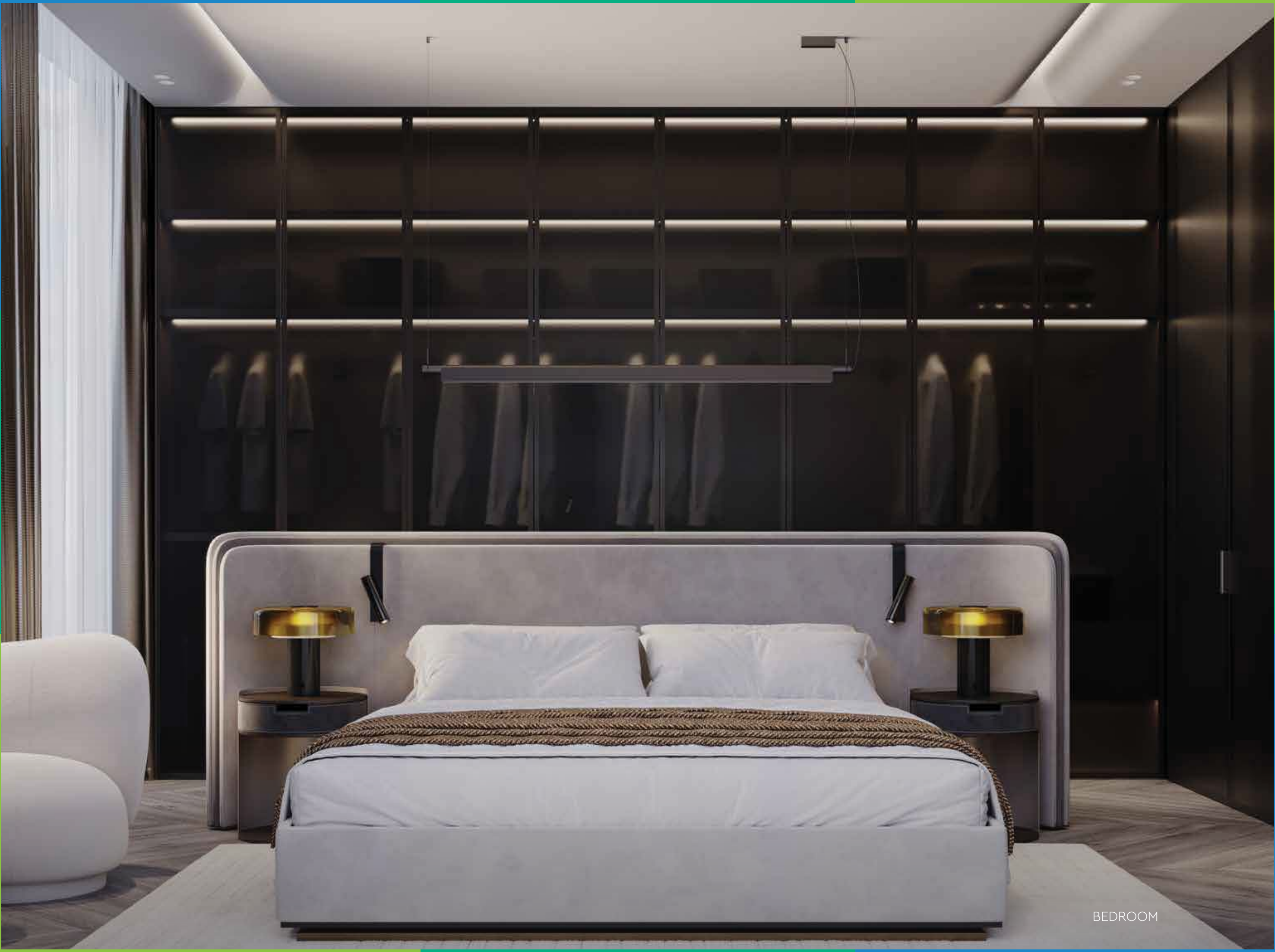


LIVING ROOM & DINING AREA





KITCHEN



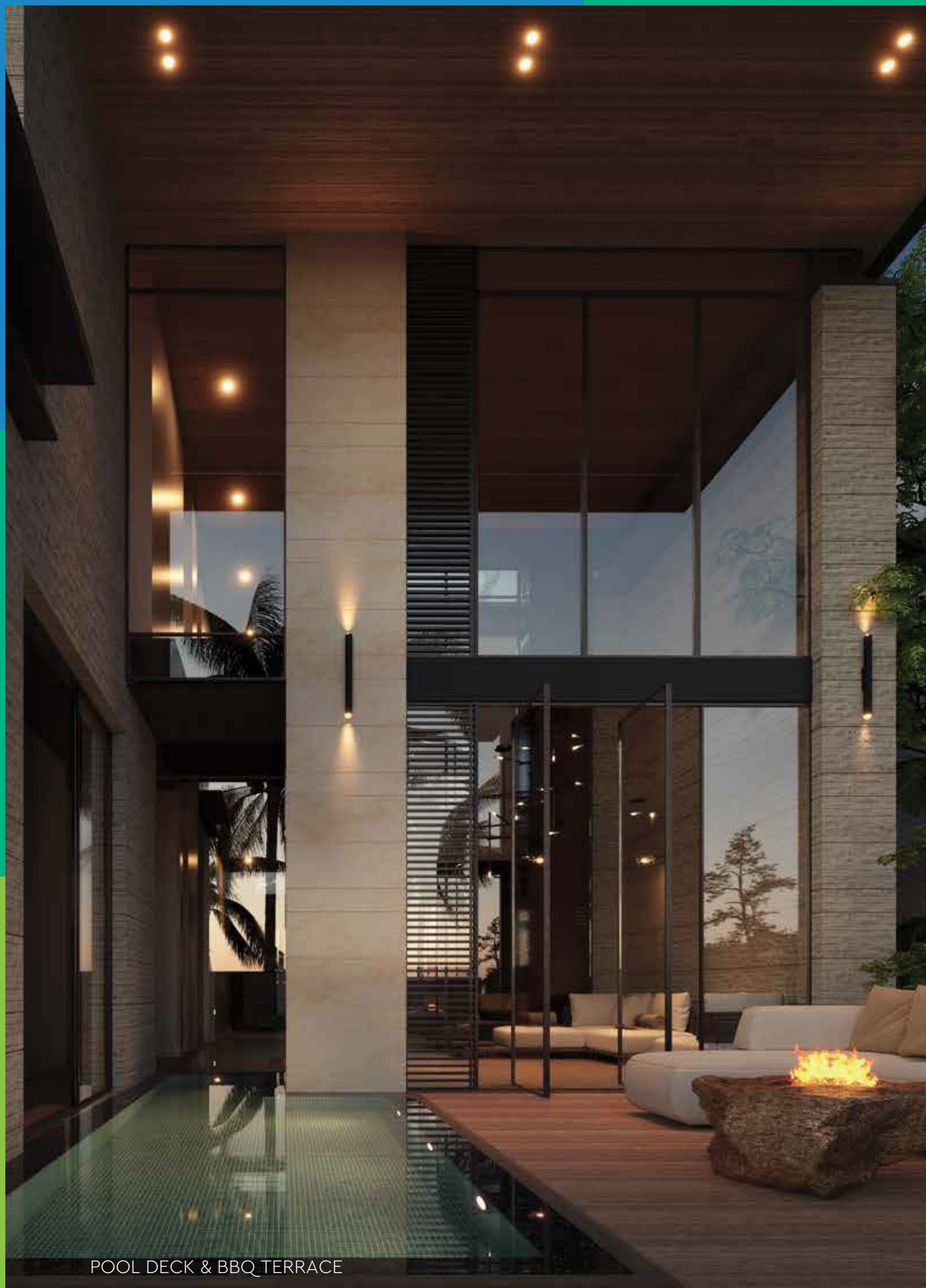
BEDROOM

LUNA VILLAS

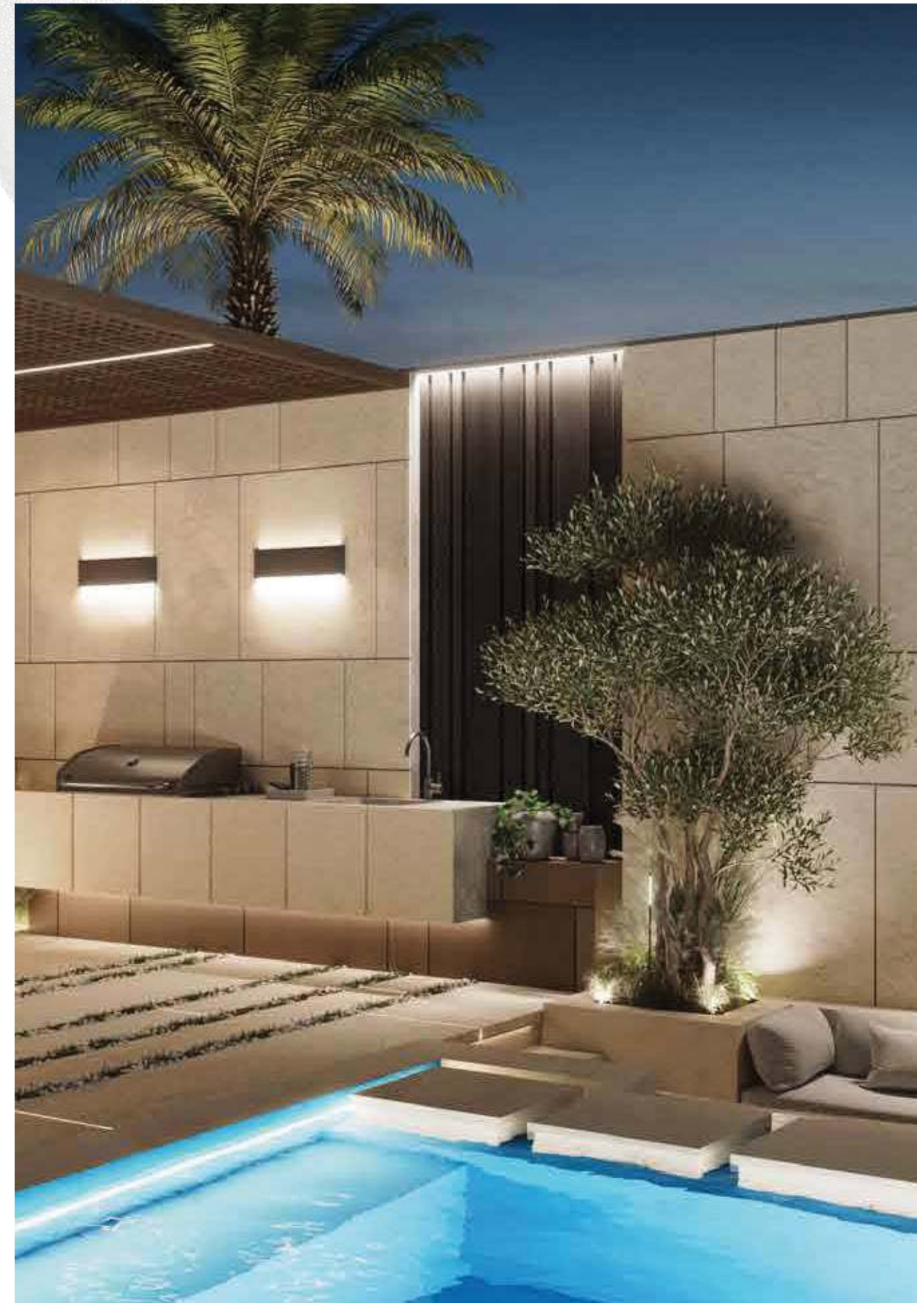
5-BEDROOM TYPE B | 4,965.76 sq.ft | 14 UNITS | PRIVATE SWIMMING POOL, ELEVATOR AND LANDSCAPED GARDEN

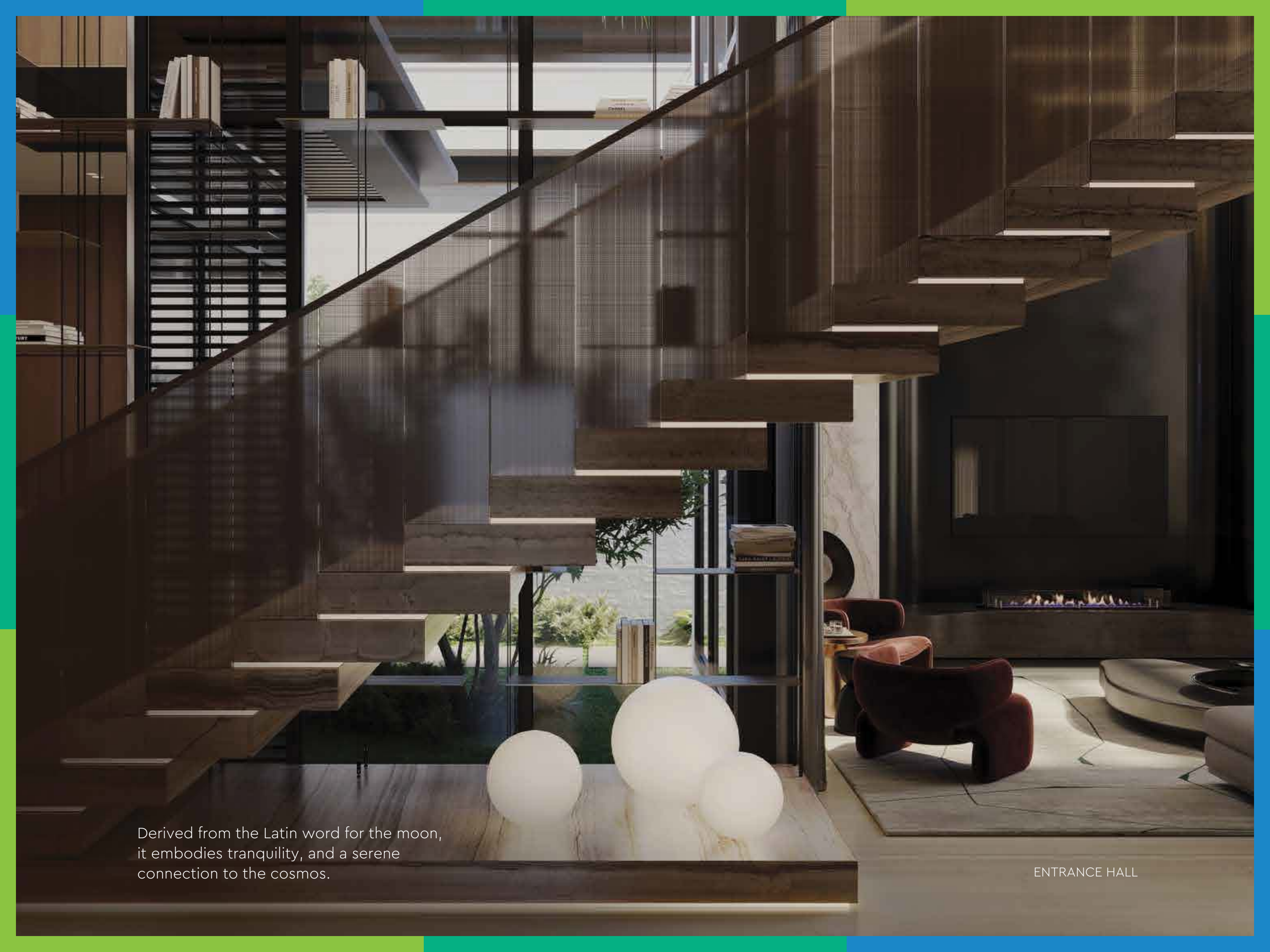






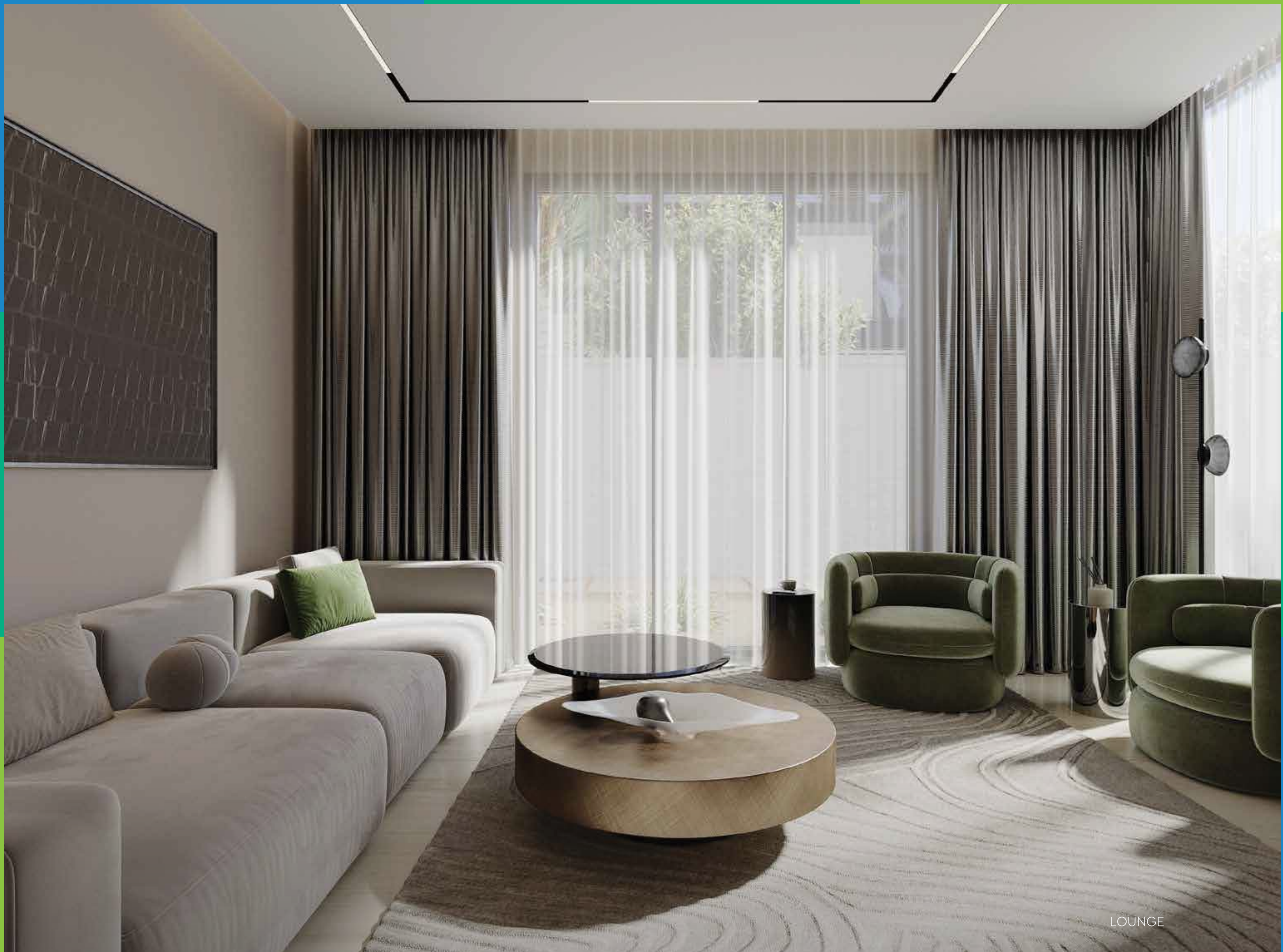
POOL DECK & BBQ TERRACE



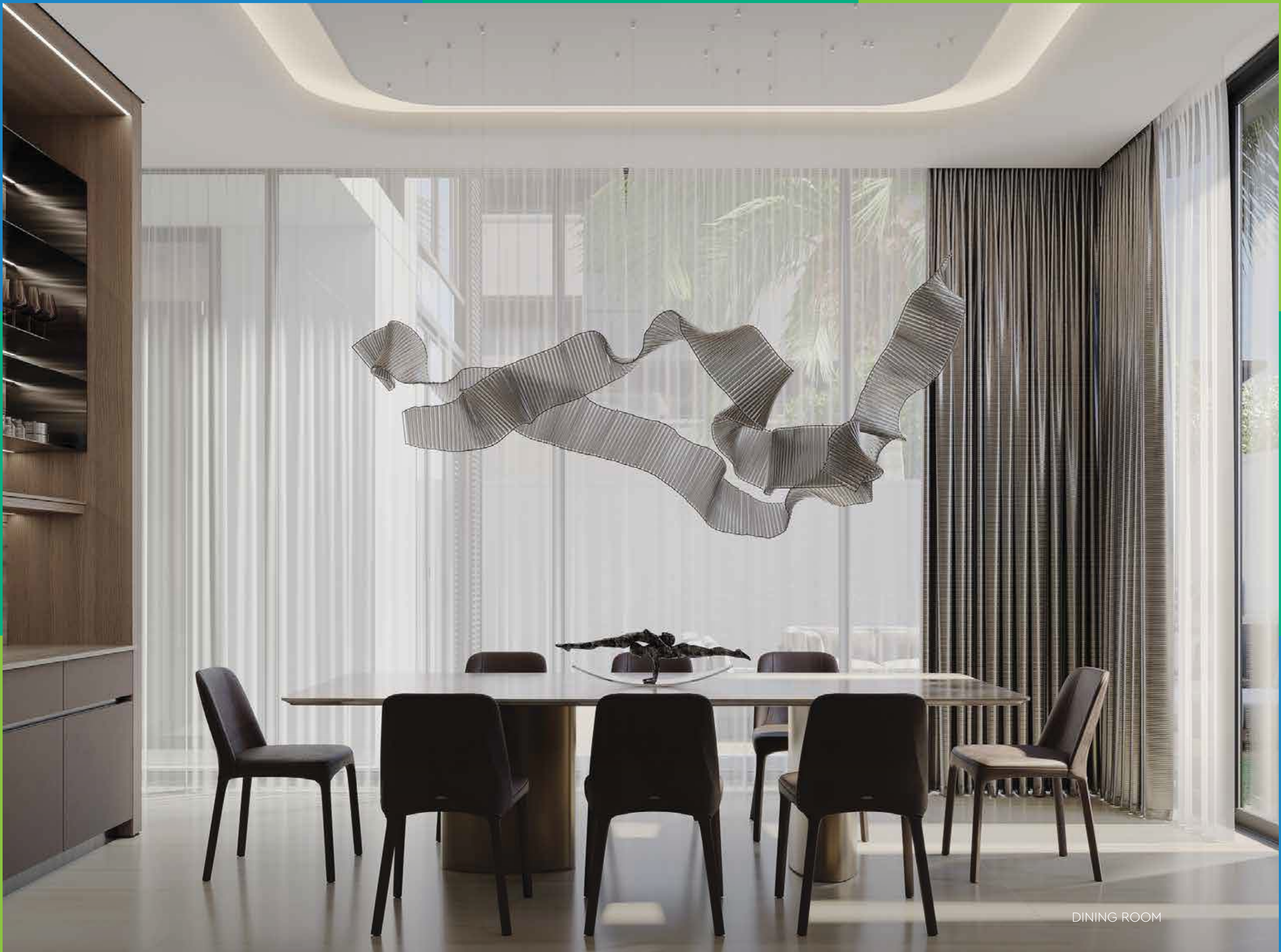


Derived from the Latin word for the moon, it embodies tranquility, and a serene connection to the cosmos.

ENTRANCE HALL



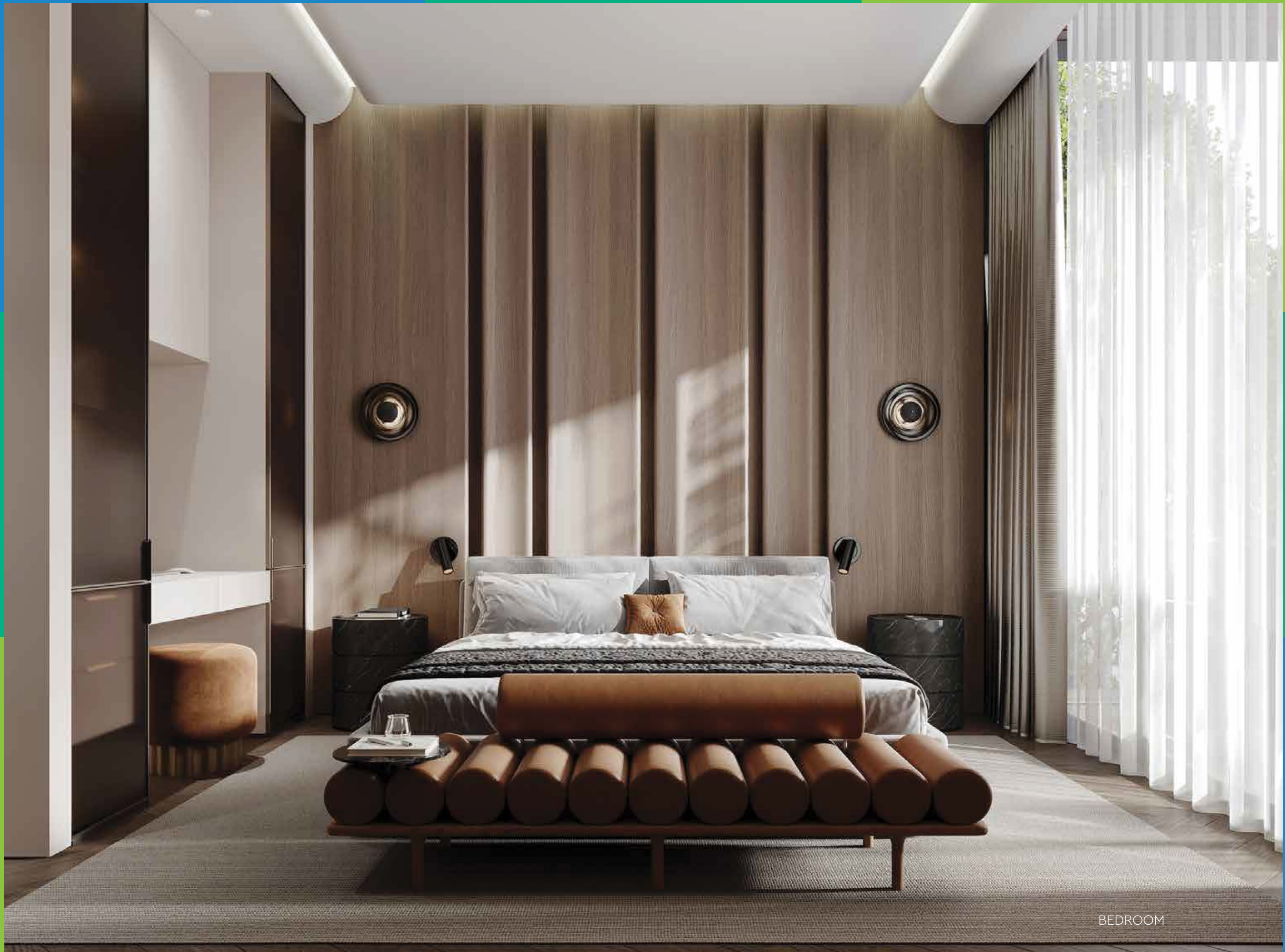
LOUNGE



DINING ROOM



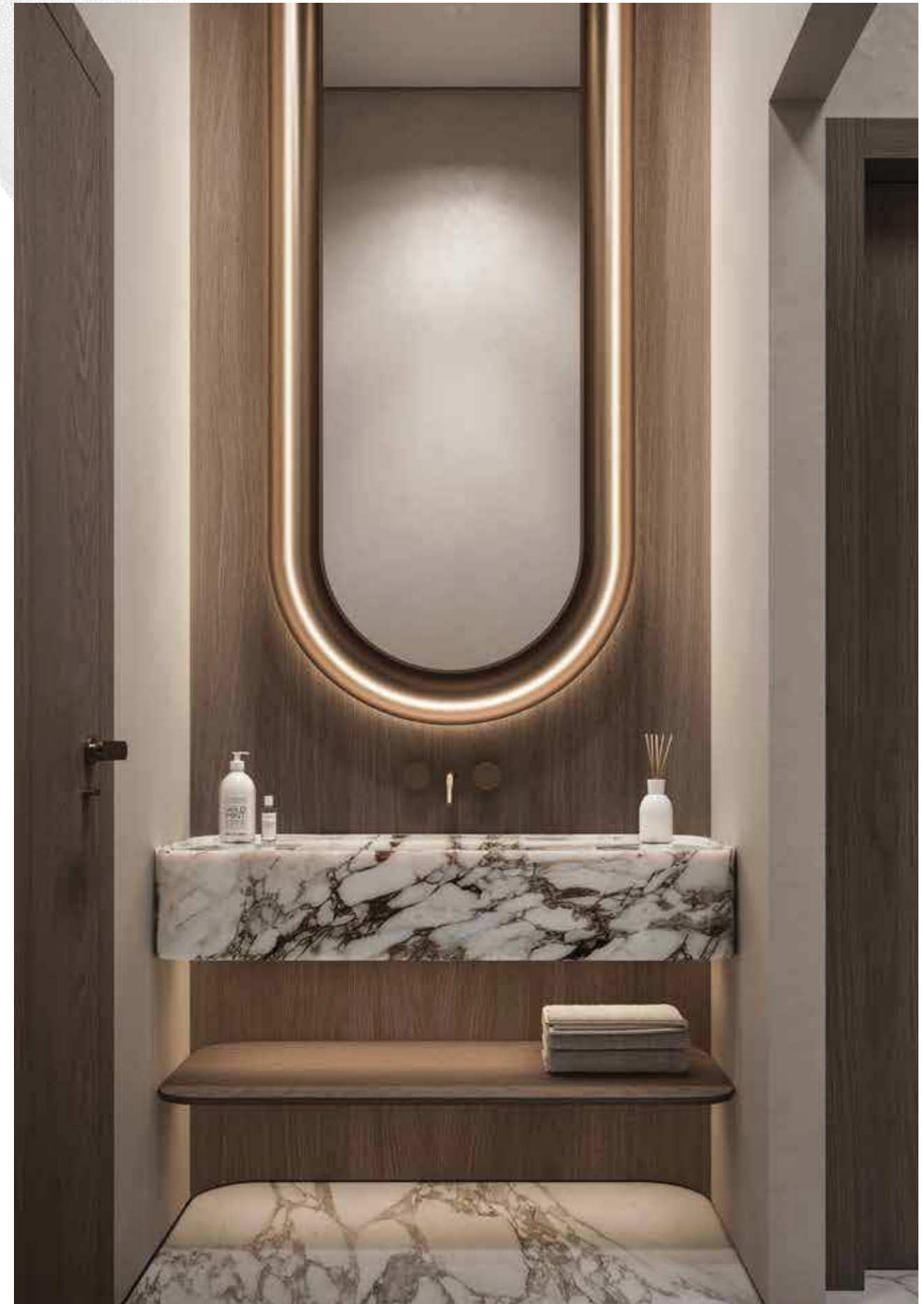
KITCHEN



BEDROOM



WARDROBE & BATHROOM



POLARIS VILLAS

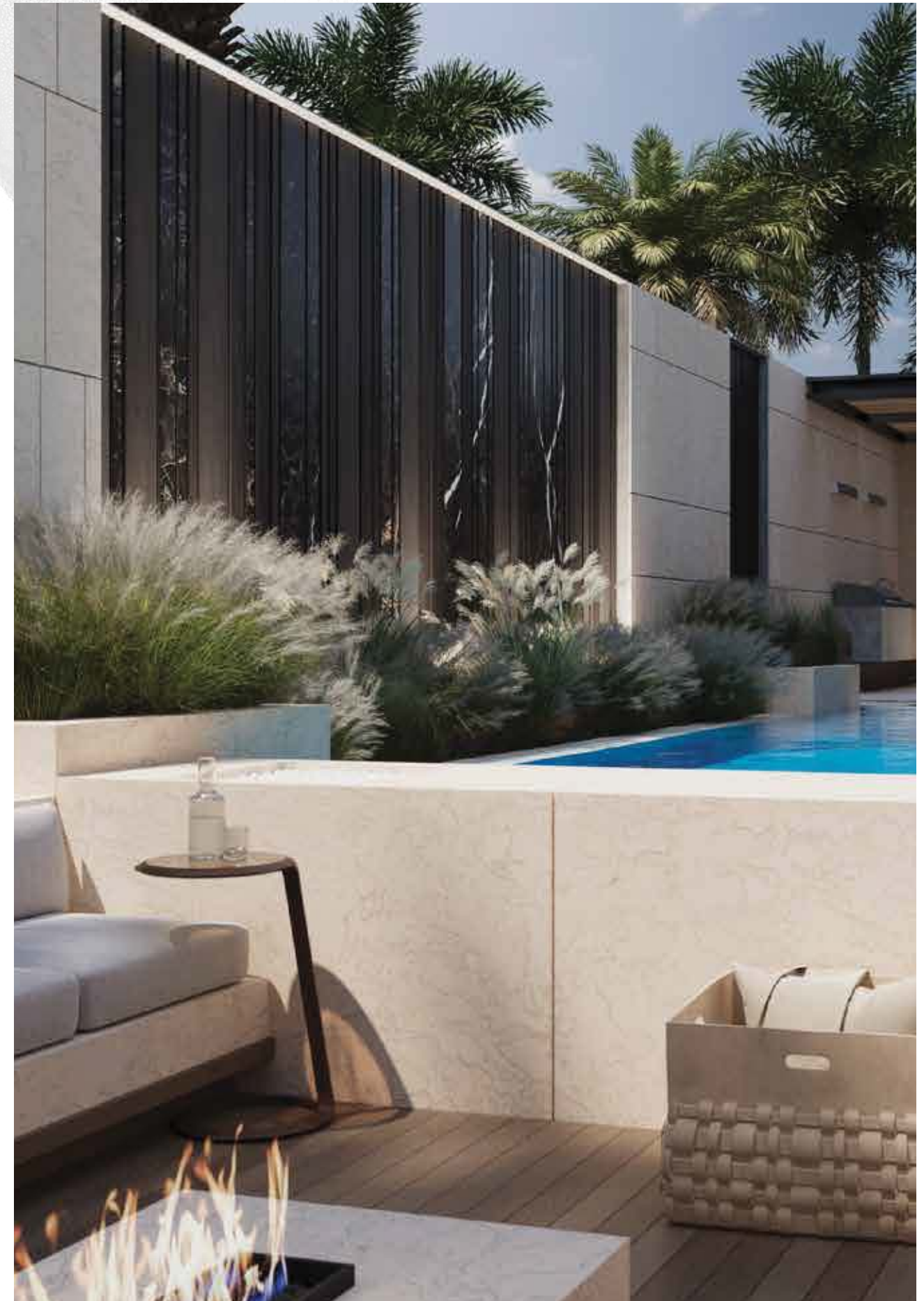
6-BEDROOM | 7,259.46 sq.ft | 4 UNITS | PRIVATE SWIMMING POOL, ELEVATOR AND LANDSCAPED GARDEN








POOL & SUNKEN LOUNGE





LIVING ROOM & LOUNGE



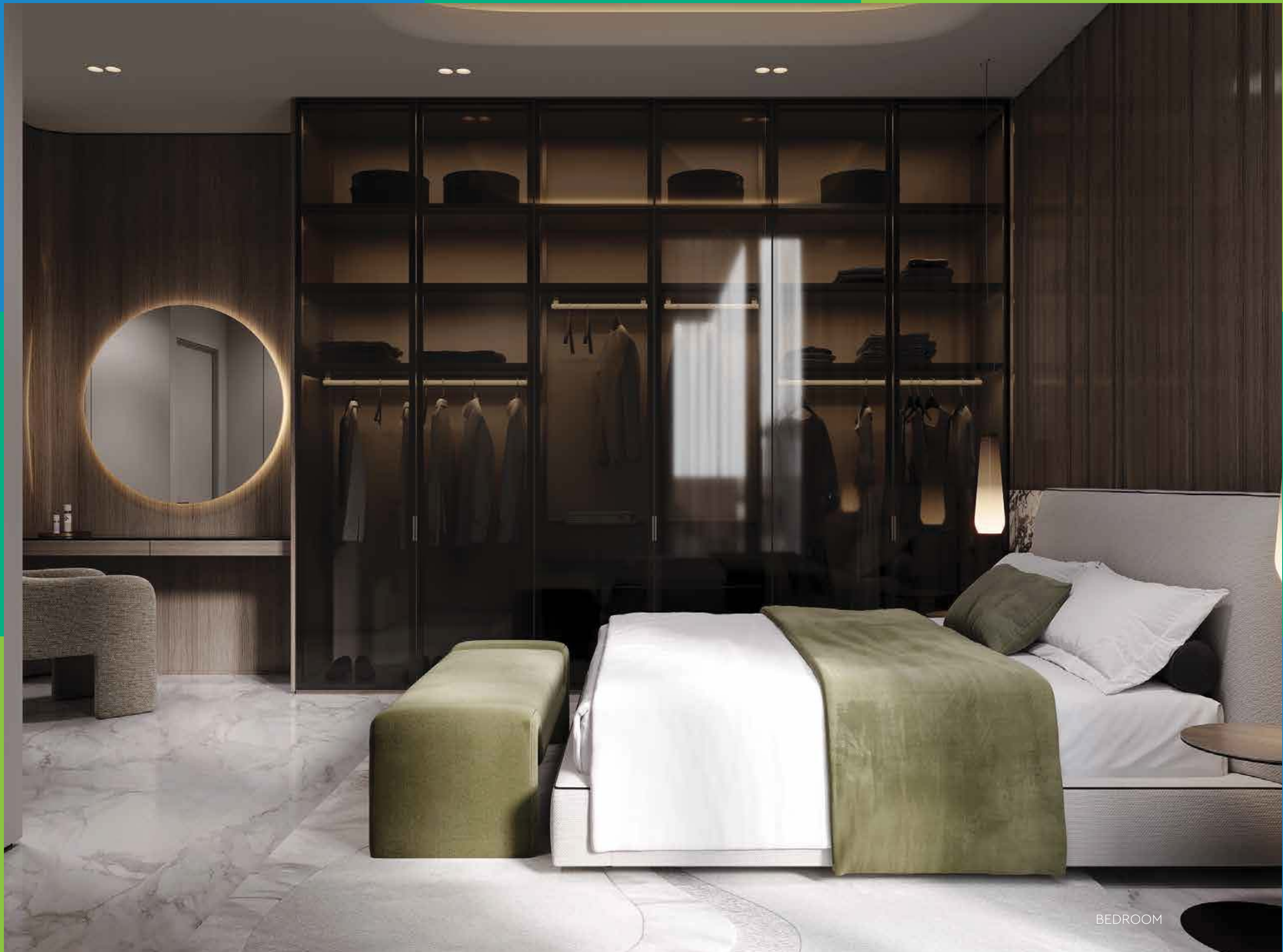


Named after the North Star, known for its steadfast position, it guides towards grandeur and magnificence.

LIVING ROOM



DINING ROOM



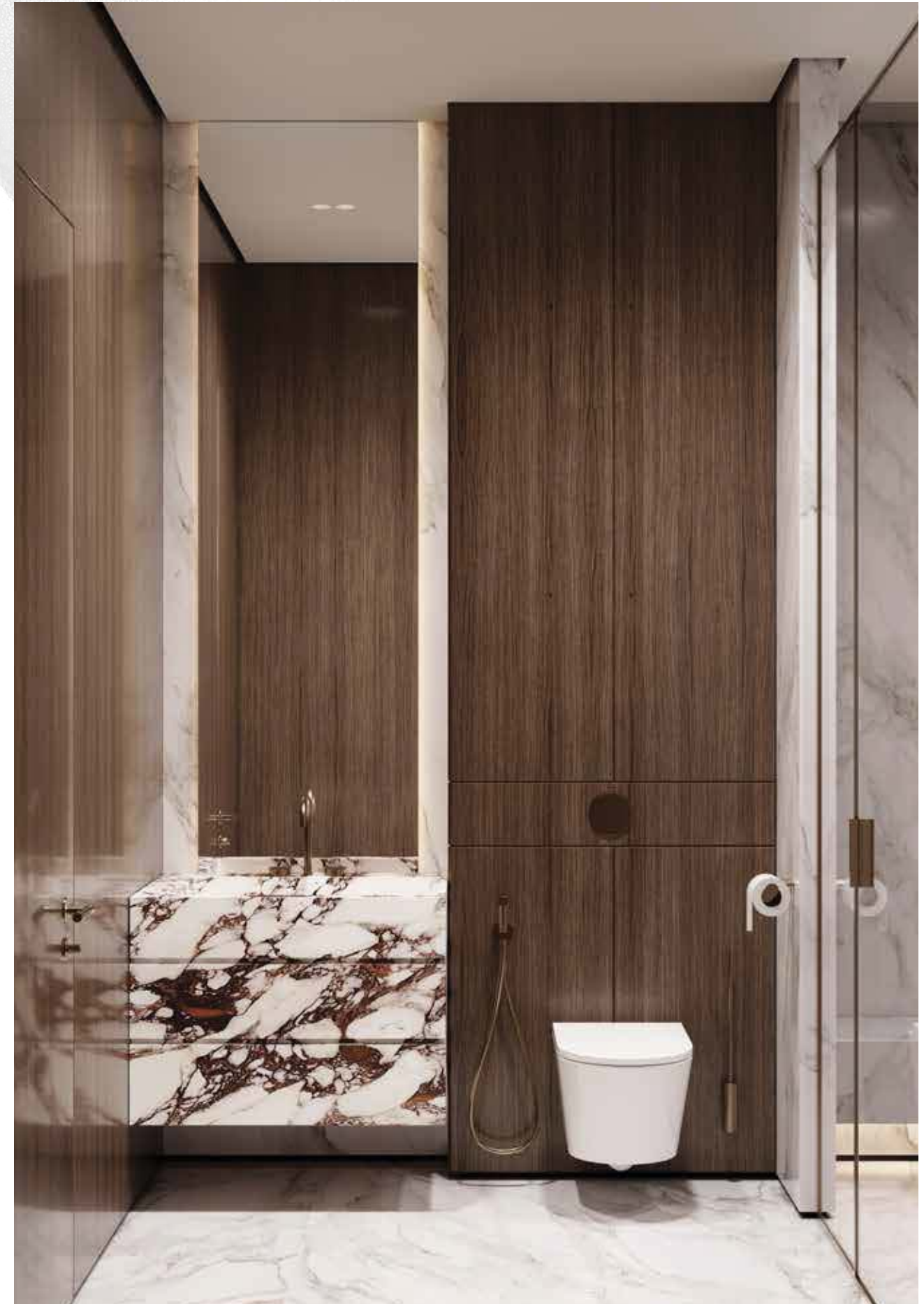
BEDROOM



WARDROBE



BATHROOM





THE ATMOSPHERE

A vibrant, modern residential courtyard. In the foreground, a paved path leads towards a green lawn. To the left, a group of people are seated at a small table under a circular wooden pergola. To the right, a child is playing on a large, complex wooden playground structure. In the background, a multi-story building with a curved, slatted wooden balcony overlooks the courtyard. The scene is set against a clear blue sky with palm trees and other tropical plants.

FACILITATING A PRESTIGIOUS COMMUNITY

Lua Residences goes beyond amenities – they create unique, calming experiences for everyone in your family. Cycling tracks, sprawling lawns, play and fitness areas, all complemented by the crystal lagoon, come together to create the perfect setting for a healthy and active lifestyle in beautiful surroundings.

Whether it's socialising with loved ones, making new friends, or having fun together, Lua Residences offers something for all ages. This is your happy place, where families can create lasting memories.



UNWIND BY THE WATER'S EDGE



SWIMMABLE CRYSTAL LAGOON



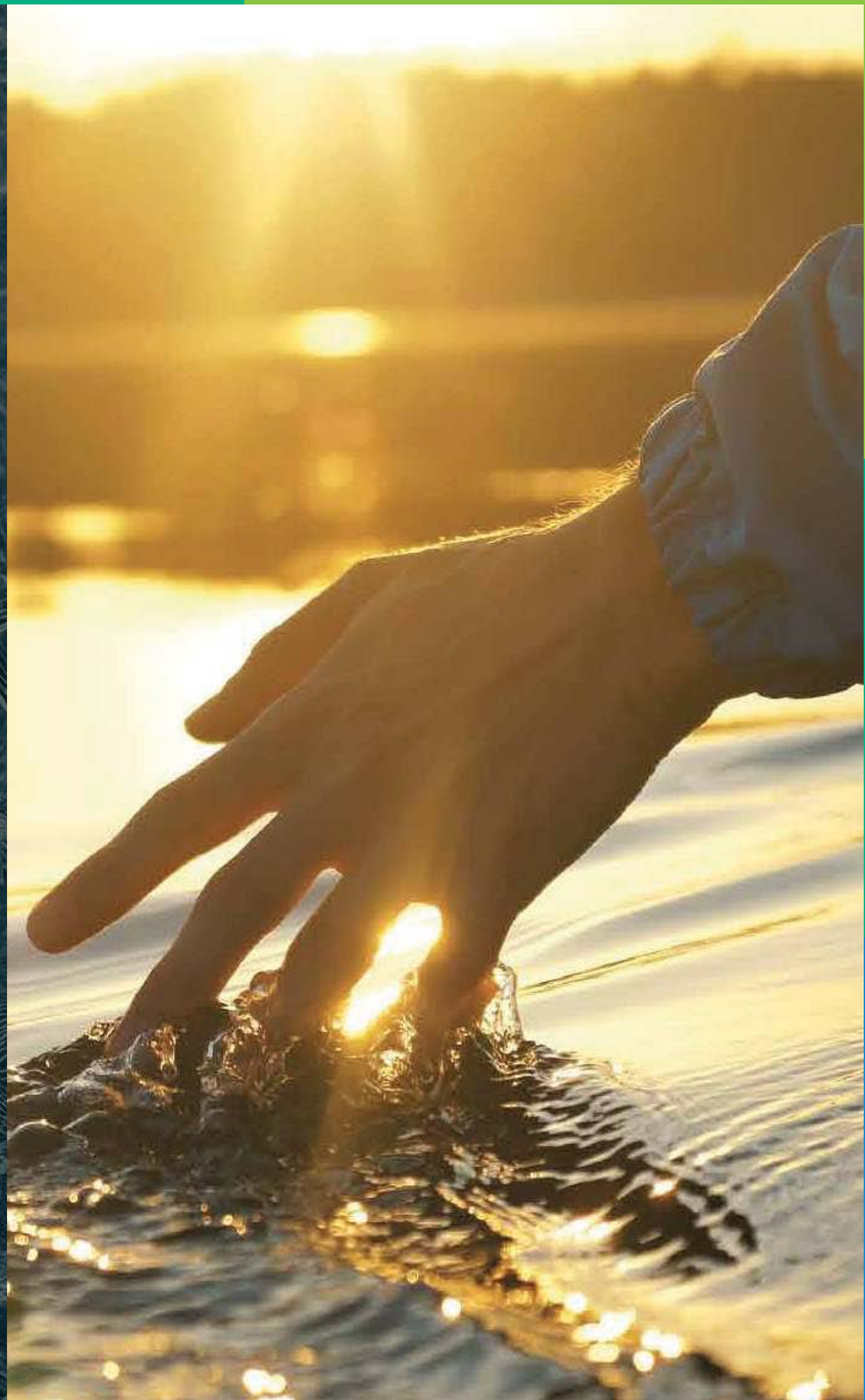
WATERSIDE WALKING / RUNNING TRACK



CANOEING / KAYAKING



SANDY BEACHES





WELLNESS & LEISURE



WALKING AND CYCLING TRAILS



RECREATIONAL AMENITIES



COMMUNITY CLUBHOUSE



OUTDOOR GYM AND SPORTS COURTS



CHILDREN'S PLAY AREAS



COMMUNITY GARDENS



LUSH LANDSCAPED AREAS



MULTI-FUNCTIONAL DECK



THE LUMINARY



ARTISANS OF EXCEPTIONAL

Swank Development, hailing from Portugal, is an esteemed European real estate developer. We bring together a wealth of experience from various sectors, including construction, design, and furniture, contributing to a holistic approach that sets us apart.

Dedicated to encapsulating the essence and heritage of Europe, we embark on a mission to seamlessly infuse the vibrant traditions, warm hospitality, and the pure joy of living characteristic of Portuguese culture into our projects in the UAE, creating a unique and sophisticated living experience for our discerning customers.

More than developers; we're artisans of style, curators of exceptional experiences, and makers of bespoke lifestyles.

"At Swank Development, beyond construction, we are all about crafting experiences and creating lifestyles. Every detail reflects our commitment to excellence. Each Swank creation is a testament to the collaboration of artisans, architects, and innovators who pour their heart and soul into every project. Their dedication and creativity transform our designs from concepts into tangible homes and dreams into living realities.

We welcome you to the world of Swank—a realm where design, dedication, and dreams converge beautifully in a harmonious blend."

Moustafa Elsaid

Managing Director and Board Member



LUA

R E S I D E N C E S

THE LIGHT OF MEYDAN

FOR MORE INFORMATION PLEASE CONTACT



REAL ESTATE

STAY AHEAD, INVEST SMART

📞 +971 55 476 7630
☎️ +971 4 368 7878
✉️ info@afsrealestate.com
🌐 www.afsrealestate.com



DUBRICKS

POSSIBILITIES ARE LIMITLESS

📞 +971 50 674 2020
☎️ +971 4 368 7878
✉️ info@dubricks.com
🌐 www.dubricks.com